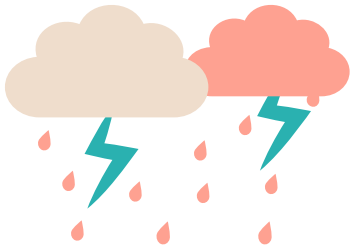


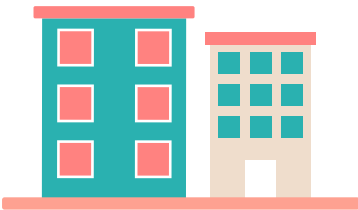
TYPHOON SURVIVAL GUIDE



WARNING SIGNALS

- T1** - Be on alert. There might be a typhoon coming.
- T3** - There is a typhoon near Hong Kong. Kindergartens and some outdoor facilities will shut. Start preparing your home.
- T8** - It's here! The city shuts down and you should stay in a safe location.
- T9 & 10** - The typhoon is severe with VERY strong winds over 118km/hour (with gusts over 220km/hour!).

PREPARING YOUR HOME



- Secure outdoor furniture.
- Securely moor vessels.
- Stock up on food and water for the whole family, including pets!
- Charge important electrical items.
- Prepare an emergency bag.
- Once the T8 has been raised DO NOT GO OUTSIDE.

WHERE TO GET INFORMATION



- The Hong Kong Observatory** is the authority on weather and warning signals. Check the website, app or call the hotline: 1878 200
- Emergency Services** - police, fire or ambulance: 999
- Government Hotline** - to report fallen trees, road conditions, landslides and building conditions: 1823
- Drainage Services** - to report flooding: 2300 1110
- Home Affairs Department** - can assist with emergency accommodation and enquiries: 2835 2500
- SPCA** - for animals in danger: 2711 1000
- Education Bureau** - for school closure information: 2891 0088
- St John Ambulance** - for 24 hour ambulance to private hospitals: 1878 000



CLEANING UP

You may notice repairs in the weeks following the storm, but in general daily life resumes before you know it!